



Pilgrim Groups Accommodation

A large selection of accommodation options is available for groups attending the International Eucharistic Congress within convenient access to the congress venue, the RDS.

Accommodation on offer ranges from university campus apartments to 5* luxury, with rates to suit every budget. Block bookings have been made in these reputable establishments with preferential rates for pilgrims attending the IEC.

Room Types

Single (SGL): A single occupancy room with one bed

Double (DBL): A double occupancy room with **one bed**;

Twin (TWN): A double occupancy room with **two beds**.

Please note: One congress registration must be booked for each bedroom reserved.

For further information or reservations contact groups@cssl.ie

Accommodation Rates at a Glance

Hotel	Star Rating	Distance from RDS	Single €	Double / Twin €	Notes
3 Star Hotels					
Bewleys Hotel Ballsbridge - Full	3	150m	€119	€129	B&B per room per night
D4 - Ballsbridge Inn - Full	3	900m	€114	€124	B&B per room per night
D4 - Ballsbridge Towers	3	900m	€120	€130	B&B per room per night
Tara Towers	3	1.6km	€89	€119	B&B per room per night
Mespil Hotel	3	2.2km	€125	€135	B&B per room per night
Trinity Capital Hotel	3	2.3km	€115	€125	B&B per room per night
Jurys Inn Custom House	3	3.3km	€125	€155	B&B per room per night
Camden Court Hotel	3	4.1km	€125	€135	B&B per room per night
Arlington Hotel	3	4.4km	€120	€158	B&B per room per night
Academy Plaza Hotel	3	4.7km	€124	€124	B&B per room per night
Maldron Hotel Belvedere	3	5km	€95	€115	B&B per room per night
Maldron Hotel Smithfield	3	5.9km	€120	€130	B&B per room per night
Maldron Hotel Parnell Square	3	6km	€115	€115	B&B per room per night
Bewley's Hotel Leopardstown	3	8.2km	€109	€119	B&B per room per night
Regency Airport Hotel	3	9.1km	€89	€119	B&B per room per night
Holiday Inn Express Dublin Airport	3	11km	€99	€99	B&B per room per night
Bewleys Hotel Dublin Airport	3	12.5km	€119	€129	B&B per room per night
Bewley's Hotel Newlands Cross	3	12.9km	€99	€109	B&B per room per night
Green Isle Hotel	3	13.3km	€99	€140	B&B per room per night
Maldron Hotel Citywest	3	17.5km	€68.50	€78.00	B&B per room per night
4 Star Hotels					
Herbert Park Hotel	4	750m	€195	€210	B&B per room per night
D4 - Berkeley	4	900m	€129	€139	B&B per room per night
O'Callaghan's Stephen's Green Hotel	4	2.2km	€165	€175	B&B per room per night
Maldron Hotel Cardiff Lane	4	2.6km	€165	€175	B&B per room per night
O'Callaghan Alexander Hotel	4	2.8km	€165	€175	B&B per room per night
O'Callaghan Davenport Hotel	4	2.8km	€165	€175	B&B per room per night
Clarion Hotel IFSC	4	3.3km	€165	€175	B&B per room per night
The Gibson Hotel	4	4.3km	€163	€179	B&B per room per night
Stillorgan Park Hotel	4	4.5km	€140	€150	B&B per room per night
Croke Park Hotel	4	4.9km	€145	€155	B&B per room per night
Hilton Hotel Dublin - Charlemont	4	5km	€180	€190	B&B per room per night
Royal Marine Hotel	4	8.1km	€120	€165	B&B per room per night
Clontarf Castle	4	8.2km	€145	€165	B&B per room per night
Hilton Hotel Dublin Airport	4	9.4km	€99	€109	B&B per room per night
Fitzpatrick's Castle Hotel	4	9.8km	€125	€165	B&B per room per night
Crowne Plaza Northwood	4	11km	€130	€150	B&B per room per night
Red Cow Moran Hotel	4	14.2km	€109	€119	B&B per room per night
Crowne Plaza Blanchardstown	4	14.8km	€130	€150	B&B per room per night
Citywest Hotel	4	16.2km	€119	€129	B&B per room per night
Radisson Hotel Dublin Airport	4	16.4km	€129	€139	B&B per room per night

Hotel	Star Rating	Distance from RDS	Single €	Double / Twin €	Notes
Grand Hotel Malahide	4	17.9km	€115	€135	B&B per room per night
Carton House Hotel	4	26.2km	€130	€145	B&B per room per night
5 Star Hotels					
Four Season Hotel	5	100m	€205	€225	B&B per room per night
Radisson Blu St. Helens	5	3.3km	€170	€180	B&B per room per night
University Campus Accommodation					
University College Dublin					
Ensuite Apartment B&B		2.5km	€60	-	B&B per room per night
Dublin City University		9km			
Visitor Suite			€55	-	B&B per room per night
Hamstead Apartments			€50	€86	B&B per room per night
College Park Apartments			€55	€89	B&B per room per night
College Park Superior Apartments			-	€94	B&B per room per night
NUI Maynooth		24km			
Regular Ensuites			€64	€79	Room Only
College Rooms			€35	€53	Room Only
Rye Hall Apartments			€37	-	Room Only
River Apartments			€46	€77	Room Only
University Village			€37	-	Room Only

3* HOTELS

3* Bewleys Hotel Ballsbridge - Full



Bewleys Hotel Ballsbridge is located directly beside the RDS. This beautifully restored 19th century building offers its guests comfortable ensuite bedrooms, free internet access, family rooms, and business facilities.

There is a good choice of dining options in the Brasserie Restaurant and Tom's Bar.

The RDS is located within a 2 minute walk of this property.

Click [here](#) for walking directions from Bewleys Ballsbridge to the RDS.

	Single Occupancy	Double / Twin Occupancy
Standard Room	€119	€129
Rate includes breakfast and local taxes. Double Rooms have one large bed. Twin rooms have two single beds. Minimum 4 night stay between 13 th and 17 th June 2012.		

D4 Hotels



The D4 Hotel complex is excellently located just 10 minutes walk from the RDS and 20 minutes to the city centre, making it an excellent choice for groups attending the International Eucharistic Congress, with no coach transfers required.



Located within the complex is a restaurant, café, bar, convenience store, hairdressers and beauty salon. Ballsbridge's and Baggot Street's large and varied selection of restaurants and bars are also at the hotel's doorstep.



The **3* Ballsbridge Inn** is an ideal hotel for both the individual and the. The classic style bedrooms in the hotel are comfortable ensuite rooms with Cable TV and free internet access. There are a limited number of family rooms available on request.

3* Ballsbridge Towers hotel is the executive wing of the Ballsbridge Inn. Rooms here are larger than average and offer tea/coffee making facilities, air-conditioning and wifi internet access.

4* D4 Berkeley Hotel Ballsbridge, formerly known as the Berkerley Court Hotel is the 4 star hotel within the complex. Its rooms are spacious and are well equipped including tea/coffee making facilities and wifi internet access.

Click [here](#) for walking directions from D4 Hotels to the RDS.

	Single Occupancy	Double / Twin Occupancy
Ballsbridge Inn - Full	€114	€124
Ballsbridge Towers	€120	€130
Berkeley Hotel Ballsbridge	€129	€139
Rate includes breakfast and local taxes. Double Rooms have one large bed. Twin rooms have two single beds. Minimum 4 night stay between 13 th and 17 th June 2012.		

3* Tara Towers Hotel



The Tara Towers Hotel is a modern hotel situated located 1.6km from the RDS. The hotel's ensuite bedrooms are bright and spacious with cable TV and individually controlled heating systems. The Hotel's

restaurant “Ocras” is newly renovated with a unique and delicious menu and Branagan’s Bar is an authentic Irish Pub.

The hotel has free Wifi and parking for guests.

Access to the RDS is convenient with direct access by public bus from directly outside the hotel.

Click [here](#) for driving directions from Tara Towers Hotel to the RDS.

	Single Occupancy	Double / Twin Occupancy
Standard Room	€89	€119
Rate includes breakfast and local taxes. Double Rooms have one large bed. Twin rooms have two single beds. Minimum 4 night stay between 13 th and 17 th June 2012.		

3* Mespil Hotel



Located on the banks of the Grand Canal at Baggot Street Bridge, the Mespil Hotel is a popular place to stay. A pleasant stroll from the hotel through Georgian Dublin will bring you to the city centre in 15 minutes and the RDS in 20 minutes.

A large and spacious hotel, the bedrooms are tastefully designed with very modern colours and décor, they have a large window and are very bright and airy. Bedrooms are well equipped and well suited for families and offer complimentary wifi internet access.

Guests can enjoy Glaze Restaurant and the Terrace Bar in the hotel, or the large selection of bars and restaurants on Baggot Street just a few minutes walk from the hotel.

Click [here](#) for walking directions from the Mespil Hotel to the RDS.

	Single Occupancy	Double / Twin Occupancy
Standard Room	€125	€135
Rate includes breakfast and local taxes. Double Rooms have one large bed. Twin rooms have two single beds. Minimum 4 night stay between 13 th and 17 th June 2012.		

3* Trinity Capital Hotel



The boutique Trinity Capital Hotel is a 2-minute walk from Trinity College and 2.3km from the RDS.

The hotel offers large rooms with TVs, internet access and the Cafe Cairo restaurant and bar

The Temple Bar district is just a 5-minute walk away and the hotel has a 24-hour reception. There is a DART Station at Tara Street just a one minute walk from the Capital Hotel which gives direct access to Ballsbridge and the RDS.

Click [here](#) for driving directions from the hotel to RDS.

	Single Occupancy	Double/Twin Occupancy
Standard Room	€115.00	€125.00
Rate includes breakfast and local taxes. Double Rooms have one large bed. Twin rooms have two single beds.		

3* Jurys Inn Custom House



Jurys Inn Custom House Quay looks out onto the River Liffey in Dublin within a very new and stylish part of Dublin which includes the new Dublin Convention Centre, the new Grand Canal Theatre and new Concert venue the O2.

The Hotel has a bar, cafe and restaurant within the building and the bedrooms are large and comfortable with cable TV and ensuite. Family rooms are also available on request. Parking is available at a fee.

Click [here](#) for directions using public transport.

	Single Occupancy	Double/Twin Occupancy
Standard Room	€125.00	€155.00
Rate includes breakfast and local taxes Double Rooms have one large bed. Twin rooms have two single beds.		

3* Camden Court Hotel



Located a short stroll from Dublin's St Stephens Green and 4.1km from the RDS, the hotel offers a wide range of ensuite bedrooms.

The hotel is well suited for the family or individual traveller, offering a complete leisure centre and business centre, complimentary Wifi, The Iveagh Restaurant and the Central Bar available for guests to get a feel for the Irish sociable nature.

Family rooms are available on request with full use of the swimming pool in the Leisure Centre.

Click [here](#) for driving directions from the Camden Court Hotel to the RDS.

	Single Occupancy	Double/Twin Occupancy
Standard Room	€125.00	€135.00
Rate includes breakfast and local taxes. Double Rooms have one large bed. Twin rooms have two single beds.		

3* Arlington – Temple Bar



The Arlington is situated opposite Dublin Castle, on the doorstep of Temple Bar and just a short walk from such sights as Grafton Street, Trinity College, Stephens Green, The O2, museums, theatres, Parliament Buildings and much more.

Guestrooms feature contemporary decor with desks, premium TV channels, complimentary newspapers, voice mail, trouser presses, and hair dryers.

Click [here](#) for directions using public transport.

	Single Occupancy	Double/Twin Occupancy
Standard Room	€120.00	€158.00
Rate includes breakfast and local taxes Double Rooms have one large bed. Twin rooms have two single beds.		

3* Maldron Belvedere Hotel



Located in the heart of Dublin, the Maldron Belvedere Hotel is just off Parnell Square on Great Denmark St, and 2 minutes from O'Connell Street and 5km from the RDS.

The Belvedere Hotel is in a Georgian quarter of Dublin. It has a popular bar and restaurant and a comedy club every Sunday night. The bedrooms are ensuite rooms with cable TV and tea and coffee making facilities.

Click [here](#) for driving directions from The Belvedere Hotel to the RDS.

	Single Occupancy	Double/Twin Occupancy
Standard Room	€95.00	€115.00
Rate includes breakfast and local taxes. Double Rooms have one large bed. Twin rooms have two single beds.		

3* Academy Plaza Hotel



The Academy Plaza Hotel is located on Findlater Street just off Dublin's O'Connell Street, right in the middle the city centre, 4.7km from the RDS.

The hotel's bedrooms are newly refurbished en-suite rooms and a number of family rooms are available. The hotel is ideal for the individual or family traveller, offering business centre, gym, spa, games room, complimentary Wifi, bar and restaurant facilities onsite. Parking is available at a fee.

Access to the RDS is convenient with buses from nearby O'Connell Street leaving regularly to Ballsbridge.

Click [here](#) for driving directions from the Academy Plaza Hotel to the RDS.

	Single Occupancy	Double / Twin Occupancy
Standard Room	€124	€124
Rate includes breakfast and local taxes. Double Rooms have one large bed. Twin rooms have two single beds.		

3* Maldron Hotel Smithfield



This Maldron Hotel is located in Smithfield Plaza, a vibrant and newly developed area of Dublin City. Just adjacent to the LUAS (tram), this hotel allows very easy access to the O'Connell Street area of the city (3 stops) and is 5.9km from the RDS.

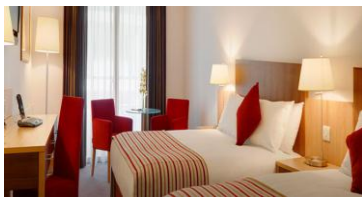
One of Dublin's most popular tourist attractions, the Old Jameson Distillery, is located nearby and the Guinness Storehouse is about a 15 minute walk or 3 stops on the LUAS.

The hotel facilities include a bar and restaurant and complimentary broadband access.

Click [here](#) for driving directions from the Maldron Hotel to the RDS.

	Single Occupancy	Double/Twin Occupancy
Standard Room	€120.00	€130.00
Rate includes breakfast and local taxes. Double Rooms have one large bed. Twin rooms have two single beds.		

3* Maldron Hotel – Parnell Square



The Maldron Hotel Parnell Square is located a few short steps from O'Connell Street and just under 6km from the RDS.

The boutique style accommodation has a modern, contemporary design in this prime city centre location. The hotel offers both bath and shower, complimentary internet access, interactive TV, 24 hour room service and has Stir Cafe and bar.

Click [here](#) for driving directions from Maldron Hotel to the RDS.

	Single Occupancy	Double/Twin Occupancy
Standard Room	€115.00	€115.00
Rate includes breakfast and local taxes. Double Rooms have one large bed. Twin rooms have two single beds.		

3* Bewley's Hotel Leopardstown



Bewley's Hotel Leopardstown is situated in South Co. Dublin just over 8km from the RDS and within easy access to the city centre via the Luas (tram), and all parts of the country with the hotel's accessibility to the motorway.

The hotel offers modern simplicity with a traditional twist and excellent facilities and services. Bedrooms are comfortable with sound proof windows, tea/coffee making facilities and complimentary wi-fi.

The hotel bar and restaurant are available for guests and the excellent choice of dining establishments in Dundrum, Ranelagh and the city centre are easily accessible on the Luas.

A coach transfer is required to access the RDS from this hotel.

Click [here](#) for driving directions from Bewley's Hotel Leopardstown to the RDS.

	Single Occupancy	Double / Twin Occupancy
Standard Room	€109	€124
Rate includes breakfast and local taxes. Double Rooms have one large bed. Twin rooms have two single beds.		

3* Regency Hotel



The Regency Hotel is conveniently located close to Dublin Airport, Croke Park and Dublin city centre. Hotel facilities include a leisure centre, swimming pool, spa facilities, restaurant and bar. Bedrooms are well equipped and tastefully decorated.

The RDS is accessible by public bus and Dart (train).

Click [here](#) for driving directions from Regency Hotel to the RDS.

	Single Occupancy	Double / Twin Occupancy
Standard Room	€89	€119
Rate includes breakfast and local taxes. Double Rooms have one large bed. Twin rooms have two single beds.		

3* Holiday Inn Express – Dublin Airport



Located just north of Dublin city centre and 11km from the RDS the Express by Holiday Inn offer guests a complimentary shuttle service from Dublin Airport.

The hotel is comfortable with ensuite rooms, and cable TV in the bedrooms. It has a spacious lounge, fully licensed bar and restaurant. It is suitable for families as all rooms with queen sized

bed also have a sofa bed for up to 2 children.

The RDS is accessible by public bus and Dart (train).

Click [here](#) for driving directions from Express by Holiday Inn to the RDS.

	Single Occupancy	Double / Twin Occupancy
Standard Room	€99	€99
Rate includes breakfast and local taxes. Double Rooms have one large bed. Twin rooms have two single beds.		

3* Bewleys Hotel Dublin Airport



Bewleys Hotel Dublin Airport is located on the north side of Dublin City Centre 12.5km from the RDS. This hotel provides a complimentary shuttle service to Dublin Airport which is located less than 5km away.

The bedrooms are comfortable, ensuite rooms with complimentary wifi and tea/coffee making facilities. Windows are all sound-proofed to ensure a good night's sleep. Hotel facilities include a leisure centre, bar and restaurant.

Click [here](#) for driving directions from Bewleys Hotel Dublin Airport to the RDS.

	Single Occupancy	Double / Twin Occupancy
Standard Room	€99	€109
Rate includes breakfast and local taxes. Double Rooms have one large bed. Twin rooms have two single beds.		

3* Bewley's Hotel Newlands Cross



Bewley's Hotel Newlands Cross offers value and quality in warm and friendly surroundings. Located on the N7, Dublin city's main artery to the south of the country.

A great night's sleep is of paramount importance at this hotel, with this in mind all bedrooms are soundproofed and boast 'dive into bed' duvets and fluffy hypoallergenic pillows to ensure you awaken refreshed for the day ahead. For added convenience complimentary wi-fi is available in all bedrooms and public areas.

The hotel also has a restaurant and lounge bar.

A coach transfer is the most convenient method to access the RDS from this hotel. Alternatively the 51c and 69 Buses departs from outside the hotel for the city centre every 45 minutes.

Click [here](#) for driving directions from Bewley's Hotel Newlands Cross to the RDS.

	Single Occupancy	Double / Twin Occupancy
Standard Room	€99	€109
Rate includes breakfast and local taxes. Double Rooms have one large bed. Twin rooms have two single beds.		

3* Green Isle Hotel



The Green Isle hotel is located on the western outskirts of Dublin, near the main route leading southwest from Dublin, recently refurbished to provide luxury accommodation.

The Hotel has spacious ensuite rooms, with phone, multi-channel tv, desk, tea/coffee tray, iron and board, trouser press, hairdryer.

Click [here](#) for driving directions from the Green Isle Hotel to the RDS.

	Single Occupancy	Double / Twin Occupancy
Standard Room	€99	€140
Rate includes breakfast and local taxes. Double Rooms have one large bed. Twin rooms have two single beds.		

3* Maldron Hotel Citywest



The modern Maldron Hotel Citywest is located 17km from the RDS and an excellent choice for the budget conscious pilgrim group. It is also an ideal choice of hotel for Irish groups travelling from the west of the country.

The hotel has a bar, restaurant and ample parking. Bedrooms all have tea/coffee making facilities and complimentary wi-fi access.

A coach transfer is the most convenient method to access the RDS from this hotel. Alternatively the 69 bus departs from outside the hotel for the city centre every 45 minutes.

Click [here](#) for driving directions from Maldron Hotel Citywest to the RDS.

	Single Occupancy	Double / Twin Occupancy
Standard Room	€68.50	€78.00
Rate includes breakfast and local taxes. Double Rooms have one large bed. Twin rooms have two single beds.		

4* HOTELS

4* Herbert Park Hotel



The Herbert Park Hotel is located just a few minutes walk from the RDS. The hotel has the privileged location in the grounds of Herbert Park, a 48-acre peaceful parkland with beautiful pond-side walks. The hotel is also located just across the road from Ballsbridge's selection of shops, restaurants and bars and allows easy access to the city centre. The hotel has its own bar, two restaurants and a fitness suite. Bedrooms offer complimentary wifi, safety deposit box and air-conditioning.

	Single Occupancy	Double / Twin Occupancy
Standard Room	€195	€210
Rate includes breakfast and local taxes. Double Rooms have one large bed. Twin rooms have two single beds. Minimum 4 night stay between 13 th and 17 th June 2012.		

4* O'Callaghan Stephen's Green



The O'Callaghan Stephen's Green Hotel is located in central Dublin within strolling distance of Grafton Street, Merrion Square and Trinity College and 2.2km from the RDS.

The hotel masterfully combines a modern atrium with two beautifully restored Georgian houses. The hotel is home to many hidden gems including a beautifully restored Georgian Library with staccato ceilings and open fireplaces on its first floor.

Click [here](#) for walking directions from the hotel to RDS.

Click [here](#) for driving directions from the hotel to RDS.

	Single Occupancy	Double/Twin Occupancy
Standard Room	€165.00	€175.00
Rate includes breakfast and local taxes. Double Rooms have one large bed. Twin rooms have two single beds.		

4* Maldron Hotel Cardiff Lane



Maldron Hotel Cardiff Lane is located very close to the city centre, off the south quays of the River Liffey and approximately a 35 minute walk to the RDS, which is also accessible by public transport. O'Connell Street, Grafton Street, Trinity College and Temple Bar are all within a 15 minute walk.

The majority of the 304 well appointed rooms are front facing with a balcony or French windows and offer complimentary broadband internet, tea/coffee making facilities, iron and work desk.

Hotel facilities include Club Vitae Health & Fitness Club including a 22 metre heated swimming pool, fully equipped gymnasium and treatment rooms.

Click [here](#) for driving directions from Maldron Hotel Cardiff Lane to the RDS.

Click [here](#) for walking directions from Maldron Hotel Cardiff Lane to the RDS.

	Single Occupancy	Double / Twin Occupancy
Standard Room	€165	€175
Rate includes breakfast and local taxes. Double Rooms have one large bed. Twin rooms have two single beds.		

4* O'Callaghan Alexander Hotel



The Alexander Hotel is located at the corner of Fenian Street and Clare Street, 2.8km from the RDS.

The hotel's location very close to South Dublin's wide selection of restaurants and bars make it an excellent choice. This excellent 4-star hotel is beautifully appointed with large bay windows, spacious lobby and a stone round tower facade. The hotel fills with light and is bright and airy.

The guest rooms have recently been refurbished and include luxury touches like cashmere bed throws and plasma TVs. Wifi access is available in the bedrooms at a cost of €12 for 24 hours.

Click [here](#) for driving directions from the O'Callaghan Alexander Hotel to the RDS.

Click [here](#) for walking directions from the O'Callaghan Alexander Hotel to the RDS.

	Single Occupancy	Double/Twin Occupancy
Standard Room	€165.00	€175.00
Rate includes breakfast and local taxes. Double Rooms have one large bed. Twin rooms have two single beds.		

4* O'Callaghan Davenport Hotel



The O'Callaghan Davenport Hotel is a traditional elegant hotel with a historic facade that dates back to 1863. The popular hotel is a well known landmark in central Dublin 2 within strolling distance to Grafton Street and Trinity College and 2.8km from the RDS. Hotel facilities include a bar and restaurant and the full selection of Dublin's south city centre restaurants are at the hotel's doorstep.

The elegantly appointed bedrooms have been recently refurbished and are equipped with plasma tv, cashmere bed throws, air-conditioning, wired and wireless internet connection, safety deposit box, tea/coffee making facilities, work desk and iron.

Click [here](#) for driving directions from the O'Callaghan Davenport Hotel to the RDS.

Click [here](#) for walking directions from the O'Callaghan Davenport Hotel to the RDS.

	Single Occupancy	Double/Twin Occupancy
Standard Room	€165.00	€175.00
Rate includes breakfast and local taxes. Double Rooms have one large bed. Twin rooms have two single beds.		

4* Clarion Hotel IFSC



The Clarion Hotel IFSC is located overlooking the River Liffey in the renewed International Financial Services District. It is a 10 minute walk to O’Connell Street and city centre areas. The LUAS (tram) is a 5 minute walk from the hotel and bring you to the heard of the city in just a few minutes.

The RDS can be accessed within an easy 40 minute walk or by walking approximately 15 minutes to the public bus service which brings you directly to the venue.

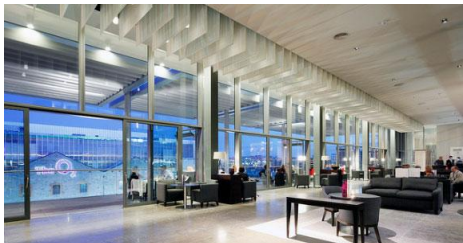
This 4 star hotel offers a bar and restaurant, spa and complimentary use of the very well equipped SanoVitae Health & Fitness Club with indoor swimming pool. Bedrooms have complimentary broadband, safety deposit box, iron and minibar.

Click [here](#) for driving directions from the Clarion Hotel to the RDS.

Click [here](#) for walking directions from the Clarion Hotel to the RDS.

	Single Occupancy	Double / Twin Occupancy
Standard Room	€165	€175
Rate includes breakfast and local taxes. Double Rooms have one large bed. Twin rooms have two single beds.		

The Gibson Hotel



The Gibson Hotel opened its doors in July 2010 in Dublin’s newly developed Point Village. Its unique design, Coda Restaurant and Hemidemisemiquaver Bar and tranquil rooms make for an enjoyable stay.

Located 5 stops on the LUAS (tram) from the O’Connell Street area of Dublin you’ll never feel too far from the action. Bedrooms offer complimentary high speed wifi and broadband, laptop safe, tea/coffee making facilities and iron.

The hotel is located 4.3km from the RDS.

Click [here](#) for driving directions from The Gibson Hotel to the RDS.

	Single Occupancy	Double/Twin Occupancy
Standard Room	€163.00	€179.00
Rate includes breakfast and local taxes. Double Rooms have one large bed. Twin rooms have two single beds.		

4* Stillorgan Park Hotel



Located 6km from the city centre and 4km from the RDS the Stillorgan Park Hotel is well suited for groups attending the International Eucharist Congress. There is free coach parking and the RDS is less than a 10 minute drive away. Access to the city centre, 15 minutes away, is also very convenient, with very frequent public buses just across the road from the hotel. The hotel offers a complimentary shuttle service

to local areas, subject to availability and booking.

Hotel facilities include an award winning restaurant and traditional bar, fitness facilities and day spa. Complimentary wifi internet access is available throughout the hotel.

Bedrooms are modern and well equipped, all with air-conditioning and tea/coffee making facilities.

Click [here](#) for driving directions from the Stillorgan Park Hotel to the RDS.

	Single Occupancy	Double / Twin Occupancy
Standard Room	€140	€150
Rate includes breakfast and local taxes. Double Rooms have one large bed. Twin rooms have two single beds. Minimum 4 night stay between 13 th and 17 th June 2012.		

4* Croke Park Hotel



A very popular Dublin hotel, The Doyle Collection Croke Park Hotel is situated across from Ireland's most famous sports stadium, Croke Park, on Jones's Road one mile from the city centre and 4.9km from the RDS. This is the home of Ireland's national sports, Gaelic Football and Hurling and will be the venue for the closing ceremony and "Statio Orbis" on Sunday 17th June.

The Croke Park Hotel has luxurious ensuite bedrooms with a pillow-top bed and duck-down duvet for the ultimate in comfort with Judith Jackson aromatherapy products. Bedrooms are air-conditioned, sound-proofed and have excellent amenities.

Hotel facilities include a fully equipped gymnasium and The Sideline Bistro and Coffee Bar offers an insight into the stadium across the road with images of iconic moments in Irish history that it has witnessed.

Click [here](#) for driving directions from Croke Park Hotel to the RDS.

	Single Occupancy	Double / Twin Occupancy
Standard Room	€145	€155
Rate includes breakfast and local taxes. Double Rooms have one large bed. Twin rooms have two single beds. Minimum 3 night stay between 14 th and 17 th June 2012.		

4* Hilton Hotel Dublin – Charlemont Place



Overlooking Dublin's Grand Canal on Charlemont Place, the Hilton Dublin is only a five minute stroll from bustling St Stephens Green. Ideally suited to both the business and leisure traveller the hotel provides guests with state of the art communications facilities, as well as a peaceful getaway.

The Hilton Waterfront Restaurant serves up delicious food and guests can unwind and enjoy the splendid views of the peaceful Grand Canal.

Click [here](#) for driving directions from the Hilton Hotel to the RDS.

	Single Occupancy	Double / Twin Occupancy
Standard Room	€180	€190
Rate includes breakfast and local taxes. Double Rooms have one large bed. Twin rooms have two single beds. Minimum 3 night stay between 14 th and 17 th June 2012.		

4* Royal Marine Hotel



A South Dublin institution established in 1828 the Royal Marine Hotel re-opened in 2007 after a major re-development project. The old Victorian building has been meticulously restored and boasts views over Dublin Bay.

Located in Dun Laoghaire, 10km from Dublin's city centre, the hotel offers convenient access for groups attending the International Eucharistic Congress. Coaches can reach the RDS in Ballsbridge within 15 minutes, or it is also possible to take the DART (train) which is a 5 minute walk from the hotel.

Dun Laoghaire boasts some of the county's most beautiful walks, it has two mile long piers and the Peoples Park, ideal for a quiet evening stroll. Coastal walks stretch for miles and really show off the beauty of the Dublin coastline.

The hotel has a choice of bars and restaurants, fitness centre and spa. Bedrooms have air-conditioning and complimentary internet access.

Click [here](#) for driving directions from Royal Marine Hotel to the RDS.

	Single Occupancy	Double / Twin Occupancy
Standard Room	€120	€165
Rate includes breakfast and local taxes. Double Rooms have one large bed. Twin rooms have two single beds.		

4* Clontarf Castle Hotel



Clontarf Castle Hotel, located in the north Dublin scenic coastal suburb of Clontarf is steeped in Irish history and is uniquely designed with the perfect mix of contemporary and tradition. It is a genuine 12th century castle converted for use as a modern luxury hotel.

Coach transfers are recommended for groups to access the RDS 8km away. Access is also possible on the DART (train) with the stations just a 10 minute walk from the hotel and RDS.

The hotel offers a choice of dining options, gymnasium and excellently equipped guest rooms.

Click [here](#) for driving directions from Clontarf Castle Hotel to the RDS.

	Single Occupancy	Double / Twin Occupancy
--	------------------	-------------------------

Standard Room	€145	€165
Rate includes breakfast and local taxes. Double Rooms have one large bed. Twin rooms have two single beds.		

4* Hilton Hotel Dublin Airport



Located on the Malahide Road in North Dublin the Hilton Hotel Dublin Airport offers a complimentary shuttle service from the airport 7km away. The hotel is approximately 13.5km from the RDS which is best accessed by private coach transfer.

The modern hotel offers comfortable accommodation and excellent facilities including the Burnell Bar & Grill.

The large bedrooms are well equipped with air-conditioning, sound-proofed windows, high speed internet access, tea/coffee making facilities and cable TV.

Click [here](#) for driving directions from Hilton Hotel Dublin Airport to the RDS.

	Single Occupancy	Double / Twin Occupancy
Standard Room	€99	€109
Rate includes breakfast and local taxes. Double Rooms have one large bed. Twin rooms have two single beds.		

4* Fitzpatrick's Castle Hotel



Situated just 20 minutes from Dublin City Centre, Fitzpatrick Castle, an 18th Century 4 Star Castle Hotel, offers opulence and tranquillity within breathtaking surroundings overlooking Dublin Bay.

The bedrooms are all well-equipped, with multi-channel television, tea and coffee-making facilities, hairdryer, mini-bar and trouser press. Rooms are also air-conditioned. There are two restaurants, which serve first-class international food. The hotel was built in 1741; however, there has been a modern extension. The lobby is large and traditional in style; it is spacious, well-lit and welcoming.

Click [here](#) for driving directions from the Hotel to the RDS.

	Single Occupancy	Double / Twin Occupancy
Standard Room	€125	€165
Rate includes breakfast and local taxes. Double Rooms have one large bed. Twin rooms have two single beds.		

4* Crowne Plaza Dublin Northwood



The Crowne Plaza Dublin Northwood is a modern hotel located 6 km from Dublin’s city centre in 85 acres of mature woodlands. Public buses just two minutes from the hotel allows for easy access to the city centre. The hotel’s contemporary décor and excellent level of service guarantee a very comfortable stay.

At 11km the RDS is accessible by public bus and Dart (train). The hotel is conveniently located to Croke Park and Dublin Airport.

Facilities include 3 restaurants and bars and a well equipped gymnasium. The hotel’s location within Northwood Park’s 85 acres allows for walking and jogging just outside the hotel.

Rooms all have air-conditioning and complimentary internet access.

Click [here](#) for driving directions from Crowne Plaza Dublin Northwood to the RDS.

	Single Occupancy	Double / Twin Occupancy
Standard Room	€130	€150
Rate includes breakfast and local taxes. Double Rooms have one large bed. Twin rooms have two single beds.		

4* Red Cow Moran Hotel



The Red Cow Moran Hotel is a modern hotel located 12km west of the city centre and 14.5km from the RDS. The city centre is easily accessible using the Luas (tram) which is 6 minutes walk from the hotel, and from the city centre the RDS can then be accessed by bus or Dart (train).

A number of dining options including the Red Cow Inn and the Winter Garden Restaurant are available which offer a choice of traditional Irish or international dishes. The ensuite bedrooms are spacious with air-conditioning, sound-proofed windows, tea/coffee making facilities and hypoallergenic pillows.

Click [here](#) for driving directions from Red Cow Moran Hotel to the RDS.

	Single Occupancy	Double / Twin Occupancy
Standard Room	€109	€119
Rate includes breakfast and local taxes. Double Rooms have one large bed. Twin rooms have two single beds.		

4* Crowne Plaza Hotel Blanchardstown



The Crowne Plaza Hotel is located in the suburb town of Blanchardstown 14km from the city centre and approximately 15km from the RDS. The large, elegantly designed hotel offers a very high level of comfort and excellent services and amenities.

The stylish bedrooms are excellently equipped with king sized beds, air-conditioning, plasma televisions, tea/coffee making facilities, bathrobe and complimentary mineral water and internet

access.

The Hotel has a relaxed ambiance and is within walking distance to one of Ireland's largest shopping centres the National Aquatic Centre.

Public transport is available to the city centre but a private bus transfer to the RDS is recommended for group transfers.

Click [here](#) for driving directions from Crown Plaza Hotel to the RDS.

	Single Occupancy	Double / Twin Occupancy
Standard Room	€130	€150
Rate includes breakfast and local taxes. Double Rooms have one large bed. Twin rooms have two single beds.		

4* Citywest Hotel



The Citywest Hotel is located 20km from Dublin's city centre and 16km from the RDS. The hotel is well suited for groups with its large number of rooms, free ample parking, excellent services and facilities. The resort encompasses lively bars and restaurants, superb leisure centre and two Christy O'Connor Jnr golf courses.

Bedrooms are very well equipped and all offer complimentary broadband internet.

Take the Luas (tram) from the Citywest complex (opening March 2011) and then the Dart (train) to Ballsbridge.

Click [here](#) for driving directions from Citywest Hotel to the RDS.

	Single Occupancy	Double / Twin Occupancy
Standard Room	€119	€129
Rate includes breakfast and local taxes. Double Rooms have one large bed. Twin rooms have two single beds.		

4* Radisson Blu Dublin Airport



The Radisson Blu Dublin Airport is located at Dublin airport 16.4km from the RDS. There are regular buses departing Dublin airport for the city centre where it is then possible to continue to the RDS by bus or Dart (train).

Hotel facilities include O'Dae's Irish Bar for all day food and carvery lunch, the Breakfast Room and the Departures Lounge for dinner and a quiet cup of coffee during the day. The ensuite bedrooms are spacious with relaxing furnishings and complimentary high speed internet access and free newspaper.

Click [here](#) for driving directions from Radisson Blu Dublin Airport to the RDS.

	Single Occupancy	Double / Twin Occupancy
Standard Room	€129	€139
Rate includes breakfast and local taxes. Double Rooms have one large bed. Twin rooms have two single beds.		

4* Grand Hotel



The Grand Hotel contains all that is essential for a traditionally serviced hotel with the modern expectations and specifications of its guests. Situated in the north Dublin coastal town of Malahide the guest can experience the best of both worlds – a relaxed location with the city just 30 minutes away. Malahide has a wide selection of pubs, restaurants and shops, as well as historic locations such as Malahide Castle, all within easy walking distance of The Grand Hotel. It is well served with parks and beaches, a marina, as well as several

golf courses.

The RDS conference venue, 18km away, can be accessed on the direct DART train or via a coach transfer.

The hotel offers a restaurant, bar and health and fitness centre and bedrooms are well equipped.

Click [here](#) for driving directions from Grand Hotel to the RDS.

	Single Occupancy	Double / Twin Occupancy
Standard Room	€115	€135
Rate includes breakfast and local taxes. Double Rooms have one large bed. Twin rooms have two single beds.		

4* Carton House



Mixing Cosmopolitan Chic with Contemporary Cool, Carton House is one of the finest luxury hotels Ireland has to offer. This beautifully restored historic mansion has been discreetly converted in to a modern luxury destination - the first of its kind in Ireland.

Located just a 20 minute drive from Dublin, the Carton House Hotel Kildare is one of the best located luxury hotels in Ireland. The 1,100-acre private parkland estate features – 2 championship golf courses, a leisure centre with pool, Spa, Training Pitches, Tennis Courts, Purpose Built Events Centre and state of the art conference facilities.

The hotel offers 165 bedrooms many with their own private balcony and all situated in the mature cedar tree estate. All bedrooms feature as standard, a King Size Bed, spacious bathrooms, complimentary Wi-Fi, Mini Bar, Tea & Coffee facilities, hairdryer, iron and ironing board.

Click [here](#) for driving directions from the Carton House to the RDS.

	Single Occupancy	Double / Twin Occupancy
Standard Room	€130	€145
Rate includes breakfast and local taxes. Double Rooms have one large bed. Twin rooms have two single beds.		

5* HOTELS

5* Four Seasons Hotel



“Handsome architectural design evokes an atmosphere of traditional comfort and ease. Windows open to brilliant greenery and charming streetscapes of ivy-covered residences and embassies”....it has to be the Four Seasons Hotel! The hotel is situated within a 2 minute walk to the RDS and just 10 minutes from the heart of the city centre.

Hotel facilities include a selection of restaurants, bars, fitness facilities, indoor swimming pool and spa, and the bedrooms offer all the amenities expected from this 5 star hotel.

	Single Occupancy	Double / Twin Occupancy
Standard Room	€205	€225
Rate include breakfast and local taxes. Double Rooms have one large bed. Twin rooms have two single beds. Minimum 4 night stay between 13 th and 17 th June 2012.		

5* Radisson Blu Hotel – St. Helen’s Stillorgan



The Radisson Blu St Helen’s Hotel, on 4 hectares of formal gardens is a luxury 5* hotel located 5km south of Dublin city and 3.3km from the RDS.

The Hotel has a number of dining options with ‘Talavera Restaurant’, voted Best Italian Restaurant in Dublin 2010 with head chief Giancarlo Anselmi, ‘The Orangerie Bar and Ballroom Lounge’ and ‘Le Panto’ the classic restaurant.

Each bedroom is stylish and elegant with Egyptian cotton sheets, complimentary wifi internet access, tea/coffee making facilities, and large windows overlooking the gardens.

Click [here](#) for driving directions from Radisson Blu Hotel to the RDS.

	Single Occupancy	Double / Twin Occupancy
Standard Room	€170	€180
Rate includes breakfast and local taxes. Double Rooms have one large bed. Twin rooms have two single beds. Minimum 4 night stay between 13 th and 17 th June 2012.		

UNIVERSITY CAMPUS ACCOMMODATION

UCD – Campus Accommodation



The UCD Campus is in Belfield, 4.5km south of the city centre and 2.5km from the RDS. Apartments each have 6 ensuite bedrooms, a kitchen and living space. The kitchen is equipped with a fridge, tea/coffee making facilities and microwave but does not have self-catering facilities. Bedrooms are fully equipped with bed linen and towels and wifi internet access is also available.

Meals are served in the campus restaurant and the apartments are within easy access to coffee shops, launderette, convenience store, bank and post office. The Campus also has a leisure centre with indoor and outdoor running track and an Olympic sized swimming pool opens in 2011.

Dublin city centre is easily accessible from UCD with numerous buses passing the university's main entrance. RDS is reached by alighting at Donnybrook and walking approximately 15 minutes to the congress venue.

Click [here](#) for driving directions from UCD to the RDS.

	B&B	Dinner, B&B
Single Ensuite Room in 6-Room Apartment	€60	€70
Rate includes breakfast and local taxes.		

Dublin City University

Dublin City University is located just north of Dublin city about 9km from the RDS. This modern campus with excellent facilities and easy access to the city centre and Ballsbridge is perfect for groups looking for budget accommodation.

Campus facilities include a convenience store, pharmacy, bank, dining hall, bar and sports centre.

Hampstead Apartments



Comfortable apartments, each with five ensuite bedrooms, and a shared living/kitchen/dining area. Each apartment comprises four single ensuite rooms and one superior ensuite room.

Each bedroom has a study area and internet access. A telephone (incoming calls only) and cable connection are provided in the living area of each apartment

College Park Apartments



Standard apartments, each with either four or five ensuite bedrooms (one superior room in each apartment), and a shared living/kitchen/dining area. This accommodation is fitted and furnished to a very high standard. Each bedroom has internet access and a study area. Telephones (incoming calls only) and cable connection are located in the living area of each apartment.

Superior College Park Apartments have double bedrooms with ensuite facilities. Each bedroom has cable connection, internet access, telephone (incoming calls only), TV, hairdryer and a study area.

The RDS is accessible by public bus and Dart (train).

Click [here](#) for driving directions from Dublin City University to the RDS.

	Single Occupancy	Double Occupancy
Visitor Suite	€55	n/a
Hamstead Apartments	€50	€86
College Park Apartments	€55	€89
College Park Superior Apartments	n/a	€94
Rate include breakfast and local taxes.		

NUI Maynooth

Maynooth is a charming university town in north Kildare, situated just 24km west of Dublin. It is serviced by frequent rail and bus connections from the capital.

The beautiful university campus at Maynooth boasts a variety of accommodation options. From standard rooms for the budget conscious to elegant suites for those who want a unique experience of comfort, the illustrious National Seminary offers guest rooms in a uniquely contemplative environment.

Savour the historical ambience of Gothic quadrangles, atmospheric cloisters, the sublime College Chapel, the ruined Geraldine castle. Or soak up the buzz of Maynooth with its abundance of restaurants, lively pubs and excellent shopping.

SOUTH CAMPUS

Regular Ensuite



Regular ensuites are located on the first floor of Long Corridor on the south campus. All rooms have a double bed with own bathroom. TV and tea-making facilities are provided.

Recently refurbished, these comfortable rooms overlook the entrance to the south campus, with splendid views of Silken Thomas's yew tree, the Geraldine castle and the Church of Ireland parish church.

There is no internet access in these rooms at present.

College Rooms – St. Patrick's House & St. Mary's House



Traditional twin and single rooms located in splendid Neo-Gothic buildings; St. Patrick's House and St. Mary's House. Rooms have splendid views over St Joseph's Square, the Bicentenary Garden and the extensive parkland walks at the rear of the College.

Simply but tastefully appointed, each of these comfortable rooms has a wash-hand basin. Toilet and shower facilities are available along each section of corridor.

Free wireless internet access is available in St Mary's House. Please ask at reception for a guest logon account. There is no internet access in St Patrick's House at present.

NORTH CAMPUS

Rye Hall



The Rye Hall apartments complex dates from 2001. Bathroom facilities are shared, in all four and seven-bed apartments, there are two toilets and two showers. An open-plan area in each apartment is comprised of fully equipped kitchen, dining-room and lounge. A central laundry facility is provided for the convenience of guests. All rooms have free wired internet access.

Rye Hall is situated beside the John Hume Building which houses a bookshop, bank, shop, post room and sandwich bar. Conference and sports facilities are nearby. Maynooth village is easily accessed via the Moyglare Road entrance.

River Apartments



Most apartments consist of five single bedrooms and an open-plan kitchen, dining-room and lounge area. Nineteen of the 111 apartments have a twin room. All bedrooms have en suite facilities. Kitchens are fully equipped, including microwave oven, kettle, cutlery and crockery. All apartments have a TV. Laundry facilities are also available.

All rooms have free wired internet access. You will need a cable which can be acquired at reception on payment of a deposit of €5, refundable on return of the cable. On request you will be issued with a guest logon account.

University Village



The University Village was the first custom-built student apartment complex at Maynooth Campus. Completed in 1991, it offers 240 single beds in 48 apartments arranged in four halls: Hargadon, Leavey, Mullin and Riordan.

Each apartment comprises of five single rooms with two WCs and showers. An open-plan area consists of a fully-equipped kitchen, dining-room and lounge.

The facilities of the north campus are within easy reach, as are the amenities of Maynooth village, including the Manor Mills shopping complex.

All rooms have free wireless internet access. Please ask at reception for a guest logon account.

Click [here](#) for driving directions from NUI Maynooth to the RDS.

	Single Occupancy	Double / Twin Occupancy
SOUTH CAMPUS		
Regular Ensuites	€64	€79
College Rooms	€35	€55
NORTH CAMPUS		
Rye Hall Apartments	€37	-
River Apartments	€46	€77
University Village	€37	-
Rates are for room only and include local taxes. Double Rooms have one large bed. Twin rooms have two single beds. Breakfast is €7.65 per person per day.		